

## Performance Report for: https://hrx.themevolty.com/v3\_bella\_209/en/

Report generated: Mon, Jul 22, 2024 8:49 PM -0700  
Test Server Location: Vancouver, Canada  
Using: Chrome 117.0.0.0, Lighthouse 11.0.0

<b>A</b>	Performance <b>99%</b>	Structure <b>92%</b>	L. Contentful Paint <b>782ms</b>	T. Blocking Time <b>93ms</b>	C. Layout Shift <b>0.03</b>
----------	---------------------------	-------------------------	-------------------------------------	---------------------------------	--------------------------------

### Top Issues

Med-High	<b>Avoid an excessive DOM size</b> TBT	2,152 elements
Med	<b>Serve static assets with an efficient cache policy</b>	Potential savings of 907KB
Low	<b>Use passive listeners to improve scrolling performance</b>	1 event listener not passive
Low	<b>Avoid enormous network payloads</b> LCP	Total size was 1.15MB
Low	<b>Properly size images</b>	Potential savings of 56.3KB

#### Focus on these audits first

These audits likely have the largest impact on your page performance.

Structure audits do not directly affect your Performance Score, but improving the audits seen here can help as a starting point for overall performance gains.

### Page Details



Total Page Size - 1.31MB



Total Page Requests - 54



HTML JS CSS IMG Video Font Other

### How does this affect me?

Modern web users have a short attention span and expect a fast and seamless website experience. Delivering that fast experience can result in more traffic, more conversions, and more happiness.

As if you didn't need more incentive, **Google use Page Speed and Page Experience (including Web Vitals) signals in their ranking algorithm.**

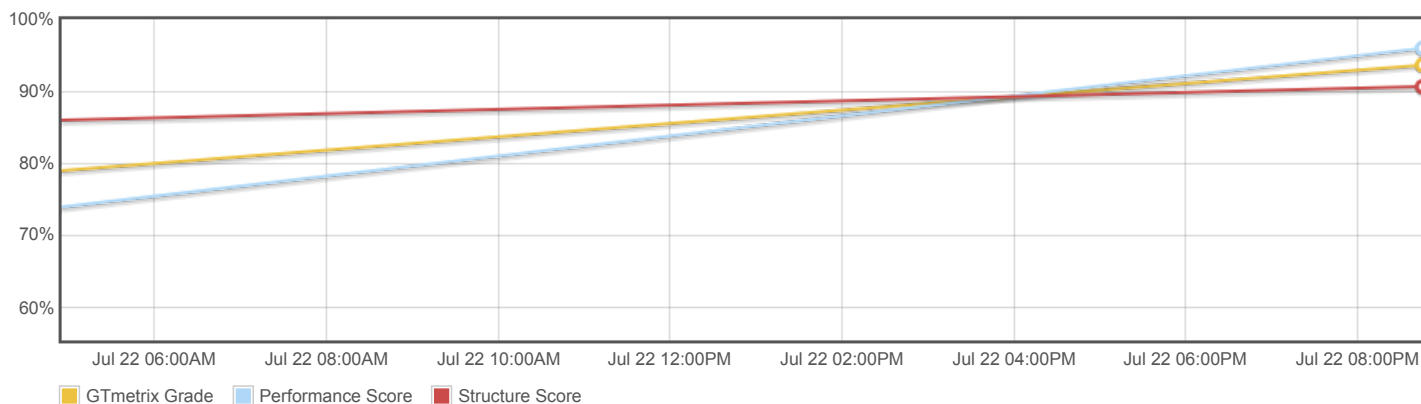
### About GTmetrix



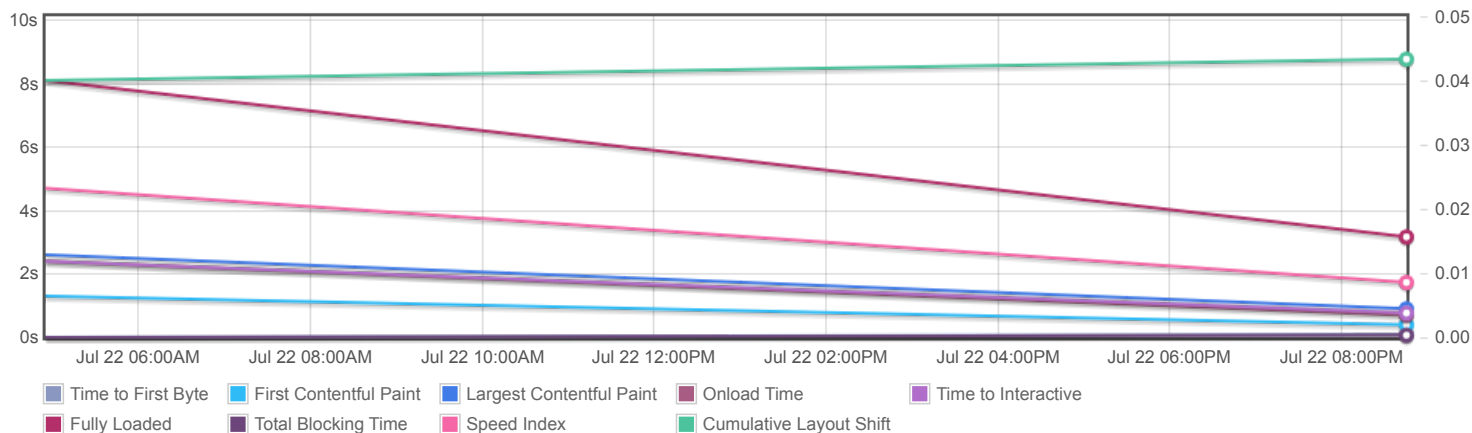
GTmetrix was developed as a tool for customers to easily test the performance of their webpages.

[Learn more about us.](#)

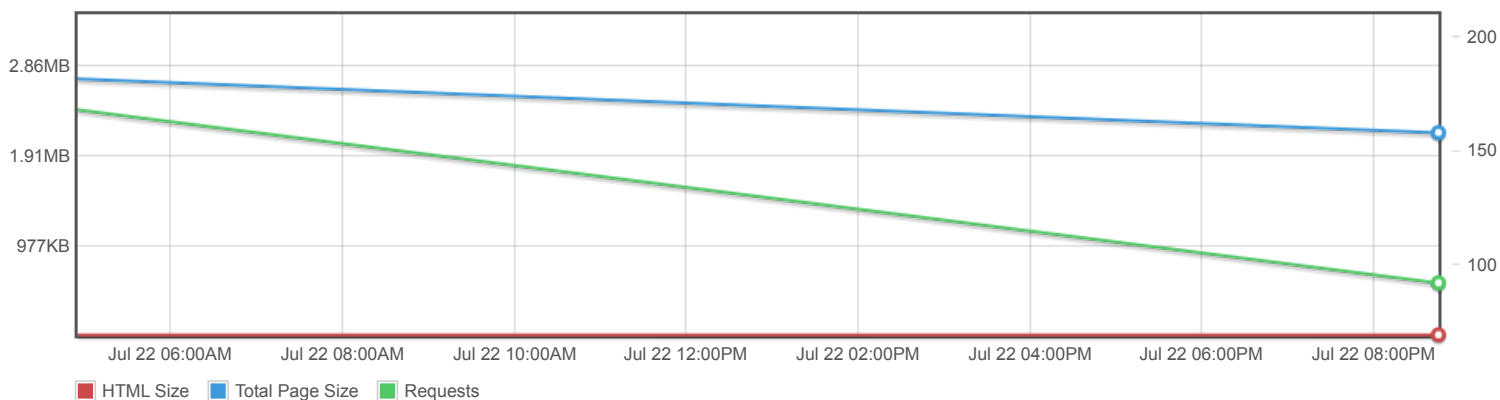
## Page scores



## Page metrics

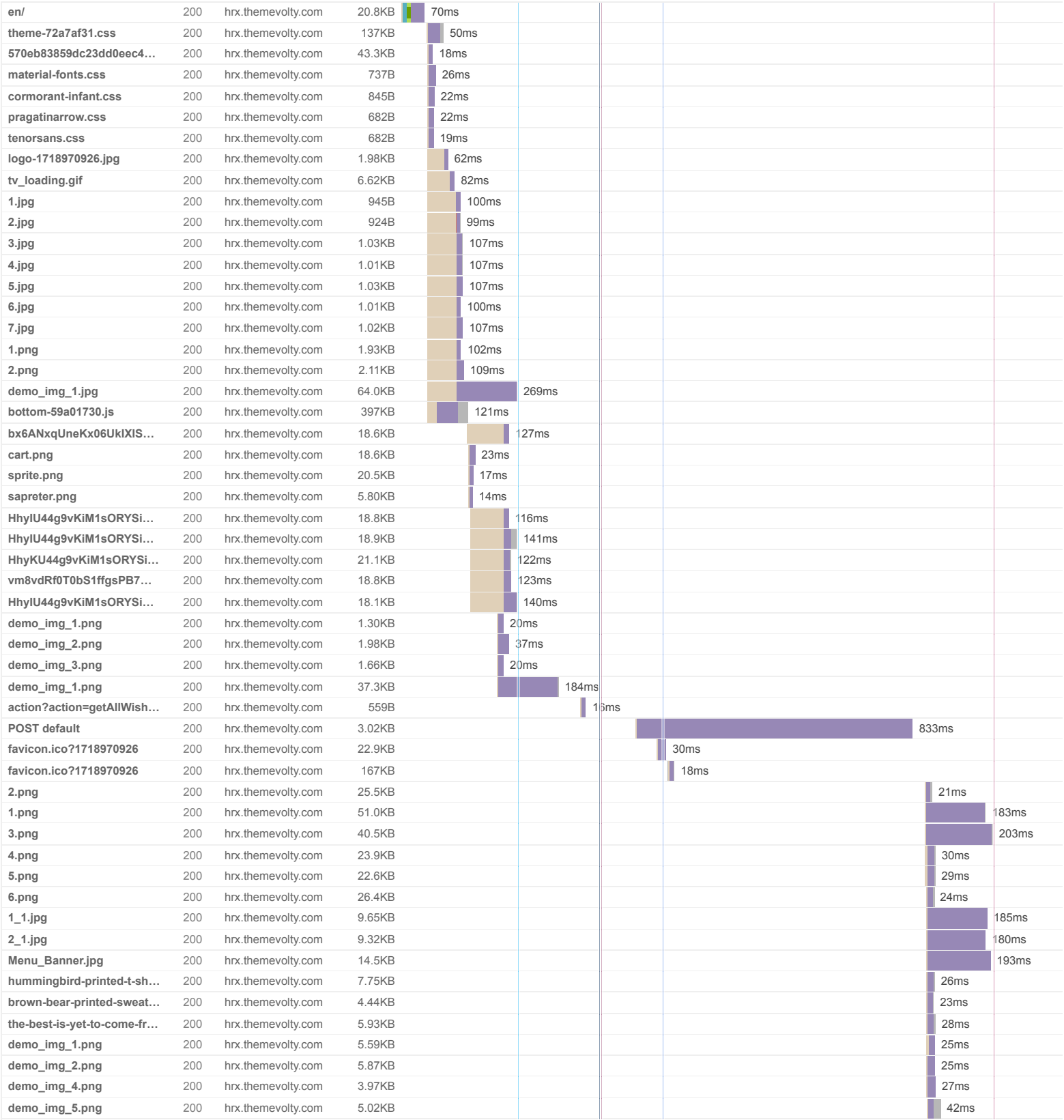


## Page sizes and request counts

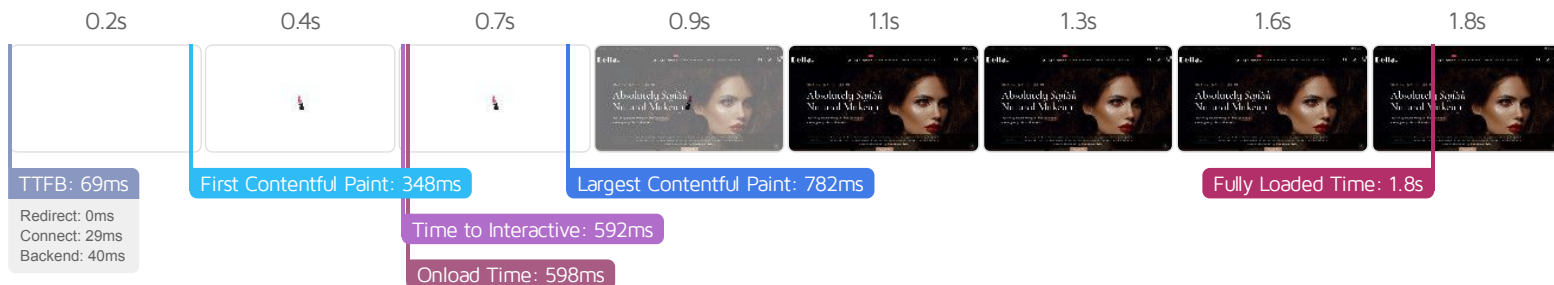


The waterfall chart displays the loading behaviour of your site in your selected browser. It can be used to discover simple issues such as 404's or more complex issues such as external resources blocking page rendering.

Bella mega store



demo_img_6.png	200	hrx.themevolt.com	4.81KB				17ms
54 Requests 1.31MB (3.28MB Uncompressed) 1.8s (Onload 598ms)							



## Performance Metrics

<b>First Contentful Paint</b> How quickly content like text or images are painted onto your page. A good user experience is 0.9s or less.	Good - Nothing to do here <b>348ms</b>	<b>Time to Interactive</b> How long it takes for your page to become fully interactive. A good user experience is 2.5s or less.	Good - Nothing to do here <b>591ms</b>
<b>Speed Index</b> How quickly the contents of your page are visibly populated. A good user experience is 1.3s or less.	Good - Nothing to do here <b>1.0s</b>	<b>Total Blocking Time</b> How much time is blocked by scripts during your page loading process. A good user experience is 150ms or less.	Good - Nothing to do here <b>93ms</b>
<b>Largest Contentful Paint</b> How long it takes for the largest element of content (i.e., a hero image) to be painted on your page. A good user experience is 1.2s or less.	Good - Nothing to do here <b>782ms</b>	<b>Cumulative Layout Shift</b> How much your page's layout shifts as it loads. A good user experience is a score of 0.1 or less.	Good - Nothing to do here <b>0.03</b>

## Browser Timings

Redirect	0ms	Connect	29ms	Backend	40ms
TTFB	69ms	First Paint	348ms	DOM Int.	590ms
DOM Loaded	592ms	Onload	598ms	Fully Loaded	1.8s

IMPACT	AUDIT	
Med-High	<b>Avoid an excessive DOM size</b> TBT	2,152 elements
Med	<b>Serve static assets with an efficient cache policy</b>	Potential savings of 907KB
Low	<b>Use passive listeners to improve scrolling performance</b>	1 event listener not passive
Low	<b>Avoid enormous network payloads</b> LCP	Total size was 1.15MB
Low	<b>Properly size images</b>	Potential savings of 56.3KB
Low	<b>Ensure text remains visible during webfont load</b> FCP LCP	1 font found
Low	<b>Avoid long main-thread tasks</b> TBT	2 long tasks found
Low	<b>Reduce JavaScript execution time</b> TBT	299ms spent executing JavaScript
Low	<b>Reduce unused CSS</b> FCP LCP	Potential savings of 126KB
Low	<b>Serve images in next-gen formats</b>	Potential savings of 207KB
Low	<b>Defer offscreen images</b>	Potential savings of 24.3KB
Low	<b>Avoid non-composited animations</b> CLS	19 animated elements found
Low	<b>Avoid chaining critical requests</b> FCP LCP	2 chains found
Low	<b>Reduce unused JavaScript</b> LCP	Potential savings of 247KB
N/A	<b>Largest Contentful Paint element</b> LCP	780 ms
N/A	<b>Eliminate render-blocking resources</b> FCP LCP	Potential savings of 0 ms
N/A	<b>Reduce initial server response time</b> FCP LCP	Root document took 39ms
N/A	<b>Avoid serving legacy JavaScript to modern browsers</b> TBT	Potential savings of 67B
N/A	<b>Avoid large layout shifts</b> CLS	4 elements found
N/A	<b>Minimize main-thread work</b> TBT	Main-thread busy for 1.5s
N/A	<b>User Timing marks and measures</b>	
N/A	<b>Reduce the impact of third-party code</b> TBT	