

Performance Report for:  
https://hrx.themevolty.com/v3\_vedriti\_110/en/

Report generated: Tue, Jul 23, 2024 10:58 PM -0700  
Test Server Location: Vancouver, Canada  
Using: Chrome 117.0.0.0, Lighthouse 11.0.0

A	Performance 100%	Structure 94%	L. Contentful Paint 624ms	T. Blocking Time 11ms	C. Layout Shift 0.05
---	---------------------	------------------	------------------------------	--------------------------	-------------------------

Top Issues

Med	Serve static assets with an efficient cache policy	Potential savings of 705KB
Med-Low	Avoid an excessive DOM size TBT	1,427 elements
Low	Use passive listeners to improve scrolling performance	1 event listener not passive
Low	Avoid enormous network payloads LCP	Total size was 923KB
Low	Properly size images	Potential savings of 76.0KB

Focus on these audits first

These audits likely have the largest impact on your page performance.

Structure audits do not directly affect your Performance Score, but improving the audits seen here can help as a starting point for overall performance gains.

Page Details



Total Page Size - 922KB



Total Page Requests - 32



How does this affect me?

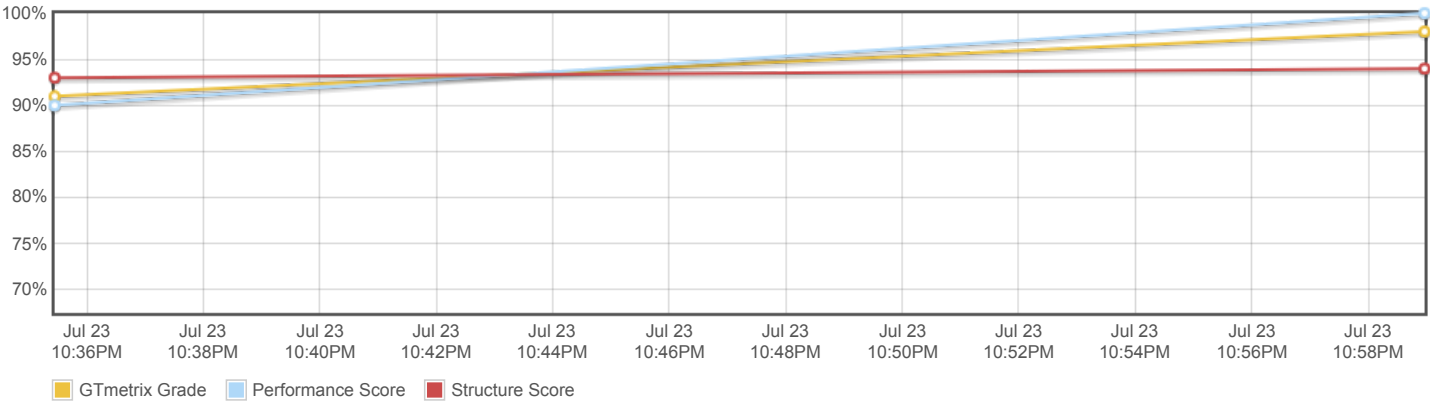
Modern web users have a short attention span and expect a fast and seamless website experience. Delivering that fast experience can result in more traffic, more conversions, and more happiness.

As if you didn't need more incentive, Google use Page Speed and Page Experience (including Web Vitals) signals in their ranking algorithm.

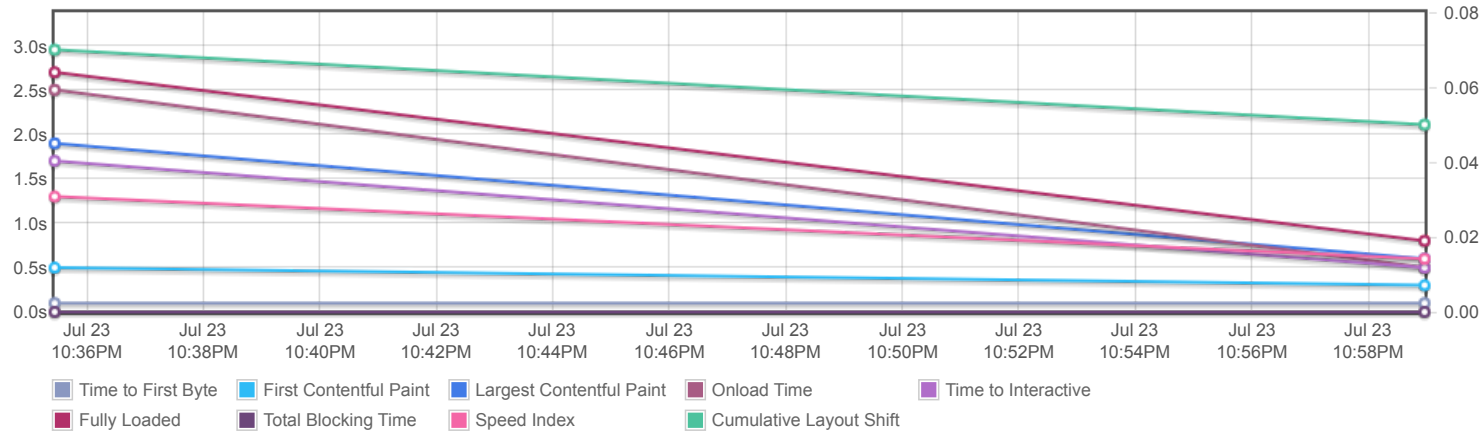
About GTmetrix

GTmetrix was developed as a tool for customers to easily test the performance of their webpages.  
[Learn more about us.](#)

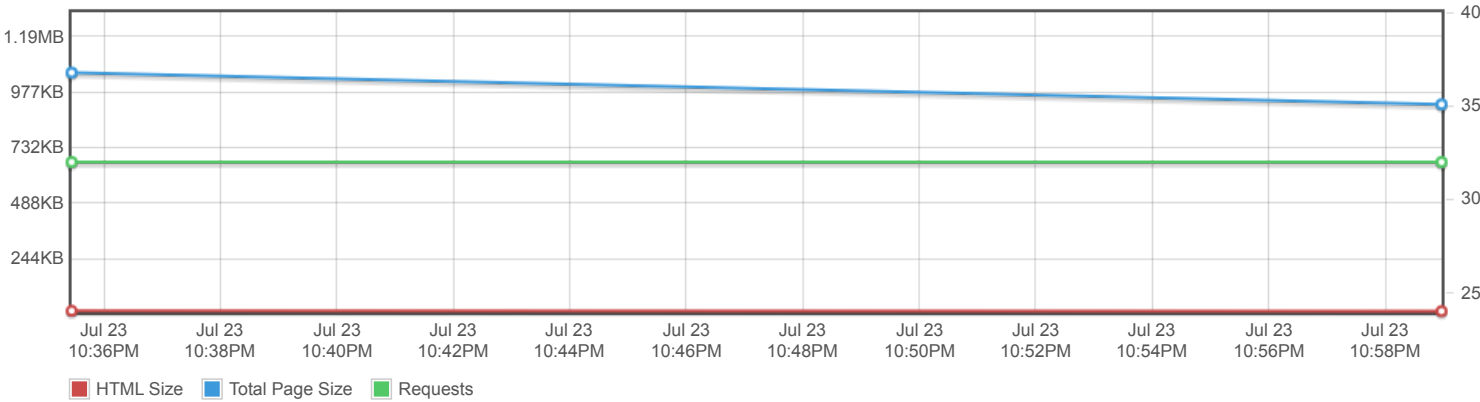
Page scores



Page metrics

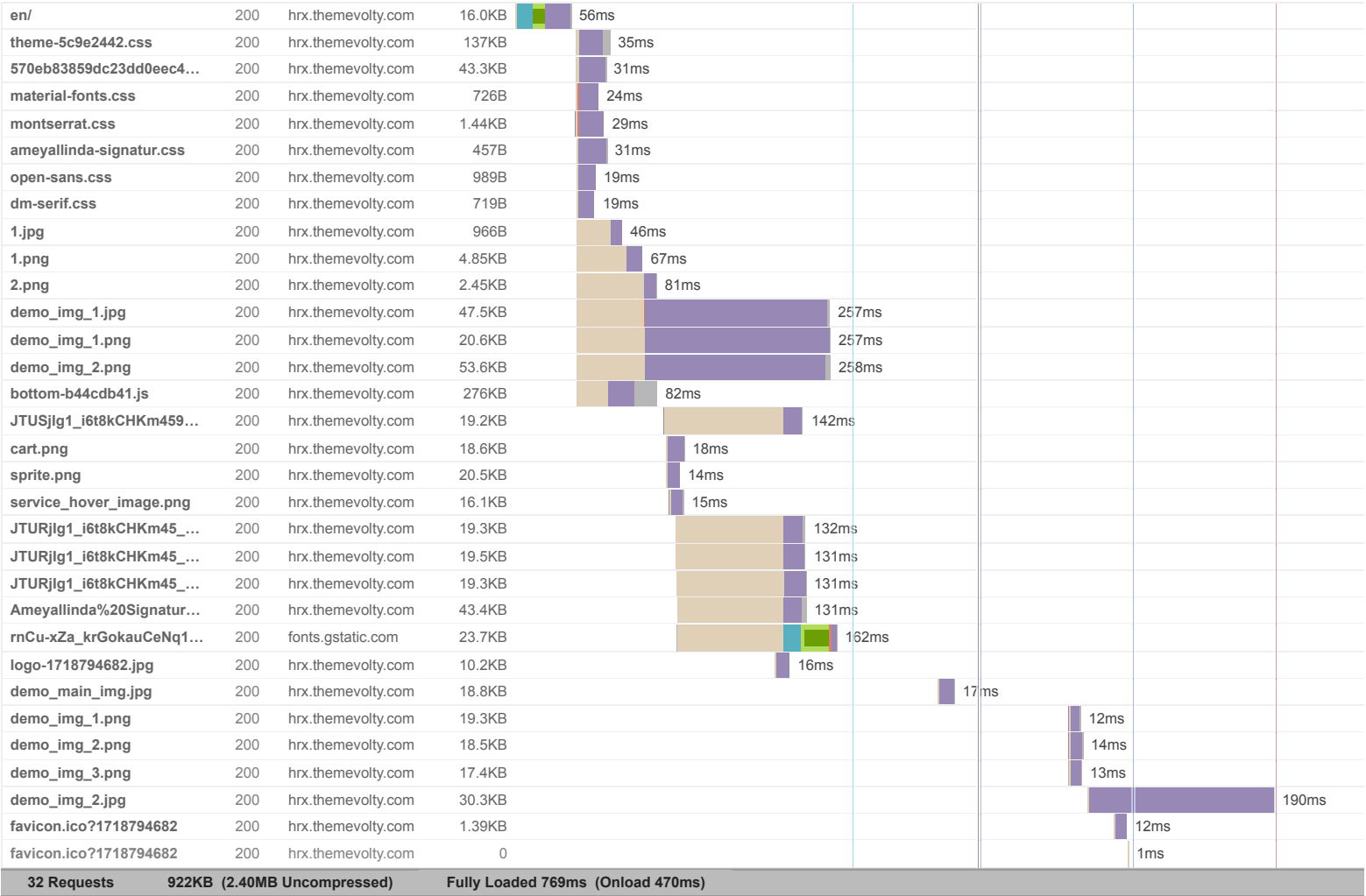


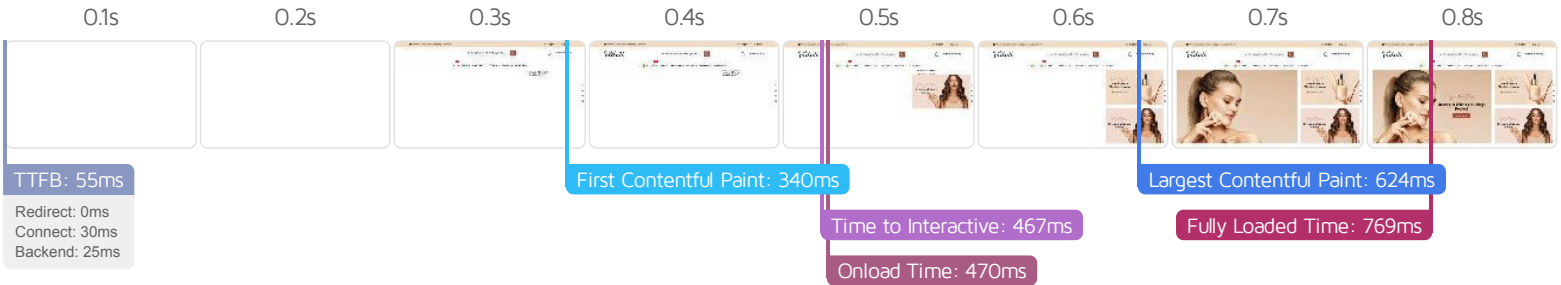
Page sizes and request counts



The waterfall chart displays the loading behaviour of your site in your selected browser. It can be used to discover simple issues such as 404's or more complex issues such as external resources blocking page rendering.

Vedriti Mega Cosmetique - Cosmetic Beauty





Performance Metrics

<p>First Contentful Paint</p> <p>How quickly content like text or images are painted onto your page. A good user experience is 0.9s or less.</p>	<p>Good - Nothing to do here</p> <p>339ms</p>	<p>Time to Interactive</p> <p>How long it takes for your page to become fully interactive. A good user experience is 2.5s or less.</p>	<p>Good - Nothing to do here</p> <p>466ms</p>
<p>Speed Index</p> <p>How quickly the contents of your page are visibly populated. A good user experience is 1.3s or less.</p>	<p>Good - Nothing to do here</p> <p>589ms</p>	<p>Total Blocking Time</p> <p>How much time is blocked by scripts during your page loading process. A good user experience is 150ms or less.</p>	<p>Good - Nothing to do here</p> <p>11ms</p>
<p>Largest Contentful Paint</p> <p>How long it takes for the largest element of content (i.e., a hero image) to be painted on your page. A good user experience is 1.2s or less.</p>	<p>Good - Nothing to do here</p> <p>624ms</p>	<p>Cumulative Layout Shift</p> <p>How much your page's layout shifts as it loads. A good user experience is a score of 0.1 or less.</p>	<p>Good - Nothing to do here</p> <p>0.05</p>

Browser Timings

Redirect	0ms	Connect	30ms	Backend	25ms
TTFB	55ms	First Paint	340ms	DOM Int.	465ms
DOM Loaded	467ms	Onload	470ms	Fully Loaded	769ms

IMPACT	AUDIT	
Med	<b>Serve static assets with an efficient cache policy</b>	Potential savings of 705KB
Med-Low	<b>Avoid an excessive DOM size</b> TBT	1,427 elements
Low	<b>Use passive listeners to improve scrolling performance</b>	1 event listener not passive
Low	<b>Avoid enormous network payloads</b> LCP	Total size was 923KB
Low	<b>Properly size images</b>	Potential savings of 76.0KB
Low	<b>Efficiently encode images</b>	Potential savings of 4.72KB
Low	<b>Ensure text remains visible during webfont load</b> FCP LCP	2 fonts found
Low	<b>Avoid long main-thread tasks</b> TBT	2 long tasks found
Low	<b>Reduce JavaScript execution time</b> TBT	157ms spent executing JavaScript
Low	<b>Reduce unused CSS</b> FCP LCP	Potential savings of 126KB
Low	<b>Serve images in next-gen formats</b>	Potential savings of 151KB
Low	<b>Defer offscreen images</b>	Potential savings of 38.2KB
Low	<b>Avoid large layout shifts</b> CLS	5 elements found
Low	<b>Avoid non-composited animations</b> CLS	3 animated elements found
Low	<b>Avoid chaining critical requests</b> FCP LCP	2 chains found
Low	<b>Reduce unused JavaScript</b> LCP	Potential savings of 199KB
N/A	<b>Largest Contentful Paint element</b> LCP	620 ms
N/A	<b>Eliminate render-blocking resources</b> FCP LCP	Potential savings of 0 ms
N/A	<b>Reduce initial server response time</b> FCP LCP	Root document took 24ms
N/A	<b>Avoid serving legacy JavaScript to modern browsers</b> TBT	Potential savings of 59B
N/A	<b>Minimize main-thread work</b> TBT	Main-thread busy for 634ms
N/A	<b>Reduce the impact of third-party code</b> TBT	Total size was 24.2KB
N/A	<b>User Timing marks and measures</b>	